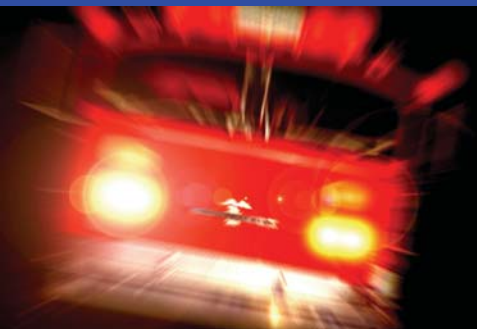


**HONDA**

# Emergency Response Guide

For Hybrid Vehicles



2006 Model Year  
Supplement

# Introduction

This supplement has been prepared to update the *Emergency Response Guide for Hybrid Vehicles* booklet published by Honda in 2005.

One purpose of the supplement is to inform emergency responders that all generic information about Honda hybrids, and the model-specific information for 2000-2005 Insights and 2005 Accord Hybrids, is valid for 2006 models as well.

The second purpose is to present new model-specific information for 2006 Civic Hybrids. Like other new Civic models, the 2006 Civic Hybrid has undergone a periodic major redesign. Compared with previous Civic Hybrids, the main changes in the 2006 model of particular interest to emergency responders are:

- The high-voltage (HV) battery is more powerful (158 volts instead of 144 volts).
- The HV battery now powers the air conditioner compressor as well as the electric motor.
- Side curtain airbags are now standard, along with front and side airbags for the driver and front-seat passenger.

Pages 2 and 3 present model-specific information to help emergency personnel identify and respond safely to an incident involving a 2006 Civic Hybrid. Because electric shock is the only potential hazard that may be unfamiliar to emergency responders, page 4 briefly summarizes the recommended procedures for preventing electric current from flowing into the HV cables.

We want to emphasize that this supplement is intended as a companion to the previously published *Emergency Response Guide*, not as a substitute for it. Copies of that guide, this supplement, and our *Emergency Response Quick Reference* card, can be ordered through any Honda dealer, or by calling Honda Customer Service at 1-800-999-1009. (The reorder number for the *Emergency Response Guide* is Y0716, the number for the *2006 Model Year Supplement* is Y0725, and the number for the *Quick Reference Card* is Y0726).

American Honda wants to thank you again for your concern and efforts in protecting Honda customers and the general public.

# 2006 Civic Hybrid

## IDENTIFYING THE CIVIC HYBRID

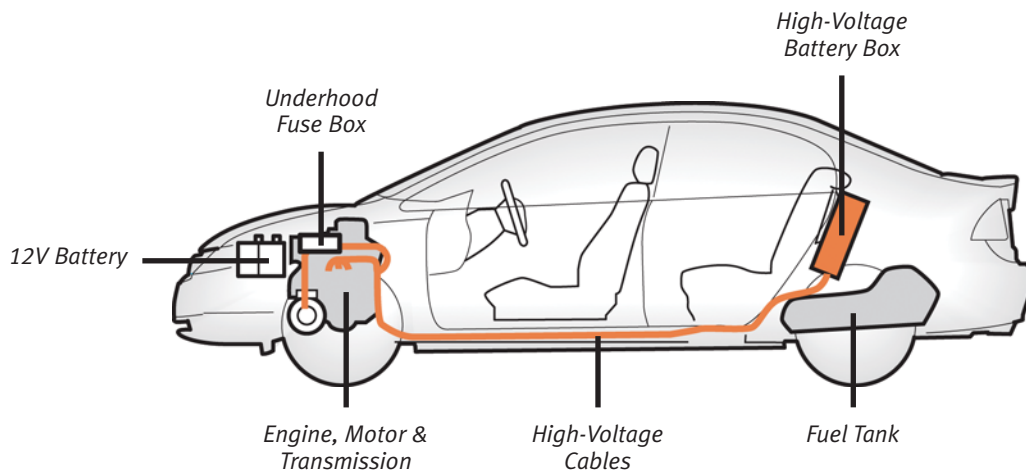
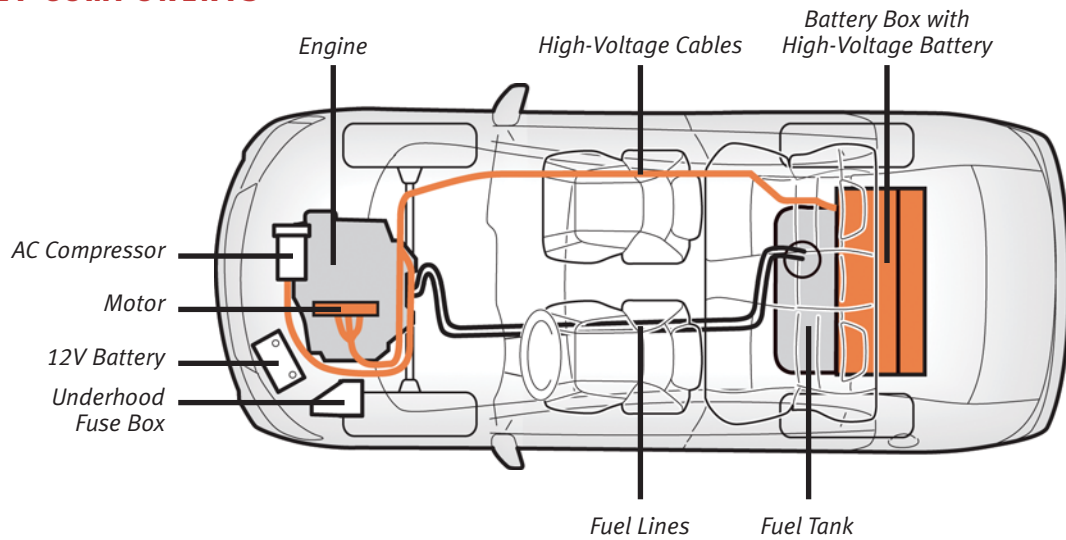


The appearance of a Civic Hybrid is essentially identical to that of a conventional Civic Sedan.



The word "Hybrid" appears on the right rear of the vehicle.

## KEY COMPONENTS



# 2006 Civic Hybrid

## FLAMMABLE FLUIDS

Gasoline:	12.4 gallons (47 liters)
Engine Oil:	4.0 quarts (3.8 liters)
Transmission Fluid:	5.4 quarts (5.1 liters)

## AIRBAGS AND TENSIONERS

Front Airbags:	Driver & front passenger
Side Airbags:	Driver & front passenger
Tensioners:	Driver & front passenger
Side Curtain Airbags:	Driver, front passenger & outer rear passengers

## UNDERHOOD COMPONENTS



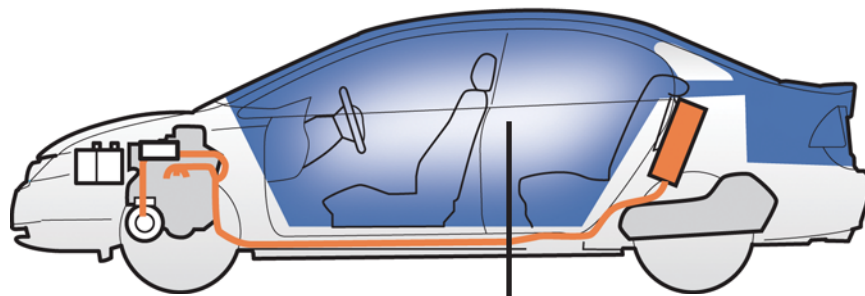
Engine      Motor      12-Volt Battery      Underhood Fuse Box

## MAIN FUSE LOCATION



Main Fuse Assembly Screws

## CUT ZONE



Cut Zone

# Emergency Procedures

Before attempting to rescue occupants, you should reduce the potential for current to flow from the electric motor or the high-voltage (HV) battery into the HV cables.

## **BEST METHOD FOR PREVENTING HIGH-VOLTAGE CURRENT FLOW**

***Turn the ignition switch off.***

This turns off the engine and electric motor, which prevents the flow of current into the HV cables. It also turns off power to the airbags and tensioners, although it takes up to 3 minutes for these to depower.

## **SECOND-BEST METHOD FOR PREVENTING HIGH-VOLTAGE CURRENT FLOW**

***Remove the main fuse assembly, and disconnect the negative 12-volt battery cable.***

Removing the main fuse assembly turns off the engine and electric motor, preventing current from flowing from the motor into the HV cables. It also cuts power to the airbags and tensioners.

Cutting the negative cable to the 12-volt battery cuts power to the high-voltage battery controllers, preventing current from flowing from the HV battery into the cables.

Referring to the photos and illustrations on the previous page: (1) Locate the underhood fuse box and remove the cover. (2) Using a Phillips screwdriver, unscrew and remove the main fuse assembly. (3) Locate the 12-volt battery and disconnect the negative battery cable, or cut the cable with diagonal cutters.

Copyright © 2006, American Honda Motor Co., Inc.

Reorder Number Y0725